

# WHY CHOOSE EASWARI ENGINEERING COLLEGE?

We aim to develop the skills, knowledge and values you need to become a leader in a rapidly changing world. You can choose from our range of professional and specialized courses.

## THE EEC ADVANTAGE

Can a college be the place that makes you a resilient, adaptable driven genius? we think so. that's why when you join EEC we'll arm you with this unmatched range of tools and experiences

CREATIVE  
CAMPUS



We want you to stand out in a sea of CV- sameness by being the most digitally savvy. Whether its creating content or solving problems you will know what to do when to do and how.

WORK  
PLACEMENT  
OPPORTUNITIES  
FOR ALL



Choose how you want to test-drive your professional purpose do a degree with a built-in placement, sign up for an internship... the options are many! we have career development counsellors who can help review your CV, run practice interviews and more...



# Professional Societies, Student Clubs

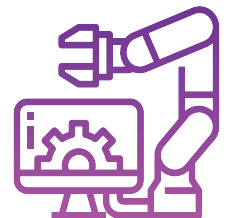
The Institution offers opportunities for the students to participate in various professional societies to make them involve in the research and to kindle the interest in their area of specialisation

 <p>Indian Society for Technical Education (ISTE)</p>	 <p>Association of Civil Engineers (ACE)</p>	 <p>The Institution of Electronics and Telecommunication Engineers (IETE)</p>
 <p>The Indian Society of Heating, Refrigerating and Air Conditioning Engineers (ISHRAE)</p>	 <p>Institute of Electrical and Electronics Engineers (ACE)</p>	 <p>Madras Management Association (MMA)</p>
 <p>International Society of Automation (ISA)</p>	 <p>Indian Concrete Institute (ACE)</p>	 <p>Computer Society of India (CSI)</p>
 <p>The Institution of Engineering and Technology</p>	 <p>Society of Automotive Engineers (ACE)</p>	 <p>The Institution of Engineers (IE-India)</p>



Its all going on @ EEC

*Campus Life*



"Aesthetics are the fireflies sparkling through the darkest of times"

A peek into the celebratory times commemorized by Campus Life of SRM EEC this year.



# WHY MECHANICAL ENGINEERING?

*There's no shortage of ways to get involved – you'll have both an outstanding education, as well as a vibrant student experience*

It is in the way we travel. It is in the way we power and heat our homes.

It is part of the way our towns and cities work and are kept safe.

It is in the way we design products to do what we need them to do. And It is in the way we manufacture them.

It is in the way we are improving healthcare and diagnosis. It is in the way we will make the most of our resources and limit waste.

It is in the future of everything, and a sustainable one too.

Mechanical engineering is one of the broadest fields of engineering you can study, where you will explore core engineering science and how it can be applied to a wide range of different environments and industries.

At Easwari, you will have the chance to study from this wide range of subject and impact areas as part of your course, taking advantage of the diverse expertise and teaching on offer across the Department - going on to specialize in the areas that interest you.

## BEYOND THE CLASSROOM

As a Mechanical Engineer, you can make an impact in:

Manufacturing

Product design

Transport and aerospace

Healthcare

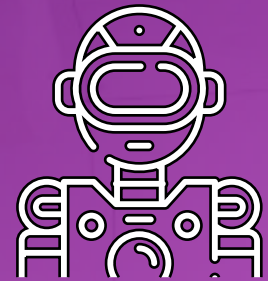
Energy and sustainability

Supply chain

Built environment

Safety

Research and many more ...



## OUT IN THE WORLD

Mechanical engineers are innovators – they're the minds behind so many technological advances of the 21<sup>st</sup> century.

These engineers are the ones making breakthrough developments in hybrid vehicle technology, finding ways to harness clean energy, and implementing autonomous operation for space vehicles.

## EXPLORE YOUR INTERESTS

Our program lets you specialize based on your interests:

Fluid mechanics, Materials engineering and processing, welding, and joining, Solid body mechanics and machine design, Thermal engineering, heat transfer and combustion, and green energy

## EMPLOYMENT OPPORTUNITIES

- Automotive manufacturing
- Aerospace engineering
- Medical device development
- Robotics engineering



### EASWARI ENGINEERING COLLEGE

#50, BHARATHI SALAI  
RAMAPURAM  
CHENNAI - 600089

+91 9786688932 | +91-44-43923048

hod.mech@eec.srmrmp.edu.in

[www.srmeaswari.ac.in/mech](http://www.srmeaswari.ac.in/mech)



[/SRMEaswariOfficial](#) | [/srmeaswari](#) | [srmeaswari.ac.in](http://www.srmeaswari.ac.in)  
[/srm\\_easwari](#) | [srmeaswari.ac.in](#)